

LARGE ITEM REMOVAL

Residents must call Johns Disposal at (262) 473-4700 to schedule a special pick up for large items. Residents get **one free** special pick up per month. Multiple items can be put out at one time for each pick up.

Special pick ups may include:

- Appliances
- Sofa, mattress, chair
- Rolled carpeting in 4' lengths
- Extra bagged garbage
- Motor oil, antifreeze, car batteries

UNACCEPTABLE ITEMS

- Yard waste
- Electronics
- Hazardous materials
- Liquid paint
- Loose construction material

YARD WASTE

• Curbside yard waste pickup is on the last Friday of every month from **March through November**.

• Brush must be less than 6" in diameter and 4' lengths, bundled together, weighing no more than 50lbs.

• Stack bundles no more than 4' high and 10' long. Limit of 1 pile this size per pickup.

• Place clippings/leaves/garden debris in marked reusable containers or compostable bags, not in plastic bags.

• Place properly contained yard waste at curb for pickup by 6am.



OFFICE HOURS

Monday - Friday
8:00am - 4:30pm
Saturday 8:00am - 12:00pm

Service provided by:
Johns Disposal Service, Inc.
107 Co Rd U,
Whitewater, WI 53190

(262)-473-4700
(888)-473-4701

www.johnsdisposal.com
office@johnsdisposal.com

Village of Union Grove

Automated Garbage & Recycling Program



BROWN CART GARBAGE EVERY WEEK

PLEASE PLACE IN THE BROWN CART

MIXED TRASH

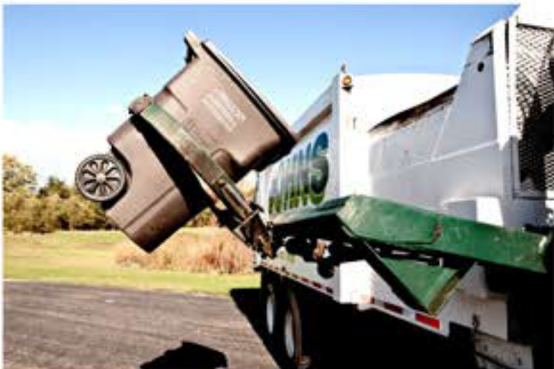
- Plastic wrap
- Plastic bags
- Broken toys
- Ceramics
- Light bulbs
- Bagged garbage
- Food waste
- Styrofoam
- Other loose trash

*Please put bagged trash in the brown cart.
Bags that are tied keep the carts clean.*

DO NOT PUT THE FOLLOWING ITEMS IN THE BROWN CART

- Yard waste
- Recyclables
- Household hazardous waste
- Cardboard boxes
- Construction materials
- Electronics

*Local clean sweep programs may offer alternative options
for disposal of fluorescent light bulbs, household hazardous
waste, pharmaceuticals and electronics.*



CART PLACEMENT

The arrows on the lid of the cart must point to the street.

Handles and wheels should face away from the street.

The garbage cart should be placed within **3ft.** of the street on one side of the driveway at or before **6:00 am.**

The recycle cart should be placed within **3ft.** of the street on the other side of the driveway at or before **6:00 am.**

Please keep **6ft.** of clearance between the carts and other objects, especially mailboxes and vehicles.



(262)-473-4700
(888)-473-4701

Family owned and operated since 1969



PLEASE PLACE IN THE GREEN CART

MIXED CONTAINERS

- Aluminum cans
- Clean aluminum foil
- Tin cans
- Steel cans
- Aerosol cans
- Empty/dried paint cans
- Glass bottles, jars
- #1-7 plastic
- Milk cartons, juice boxes, soup cartons

MIXED PAPER

- Newspaper
- Magazines
- Books
- Mail
- School/office paper
- Brown corrugated cardboard
- Gray chipboard (cereal & shoe boxes)
- Brown paper bags

SHREDDED PAPER

Please put in a secured clear plastic bag, and place in the GREEN cart. No other recycling should be placed in bags.

DO NOT PUT THE FOLLOWING ITEMS IN THE GREEN CART

- Styrofoam of any kind
- Yard waste
- Trash
- Household hazardous waste
- Construction materials
- Electronics
- Clothing