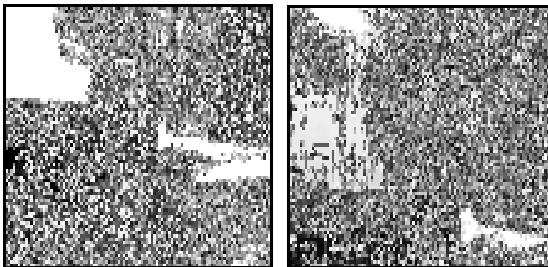


- **CITY OF WHITEWATER ORDINANCE CODE:**
Place carts curbside *after* 4pm Wednesday. Remove carts from curbside *before* 9am Friday. Carts shall be screened from view at the side or rear of the house if possible, or stored in a garage. **Fines will be issued for violations to the above Municipal Ordinance Code and/or trash that is ordered to be collected by the City.**
- **WE RECOMMEND** that all items are put out ***Wednesday nights***. Please be sure to have all items out by **6:00 am Thursday at the latest**.
- **THE BROWN/GARBAGE CARTS** will be collected every week. All trash must be in the cart. **Extra material can only be taken with the bulky collection.**
- **THE GREEN/RECYCLE CARTS & BULKY ITEMS** (which should be set next to the green cart) will be collected **every other week**.
- **IF A GREEN/RECYCLE CART IS PUT OUT ON THE WRONG WEEK, IT CAN NOT BE COLLECTED!** The recycling truck will be collecting every other week. A collection calendar will be provided.
- **AN AUTOMATED HYDRAULIC ARM LIFTS & EMPTIES THE CART.** The carts need to be set as close as possible to the curb. Carts need to be away from cars, objects, etc. The arm reaches from the side of the truck so the truck needs to be able to drive next to the cart.



BULKY ITEMS COLLECTION

The collection for bulky items will be every other week on the same week as the recycling collection.

Place all large items including furniture, carpeting, large metal, large cardboard (empty and flattened) and appliances next to (not in front of) the Green Recycling Cart.

Also, place small items including automotive batteries, tires (two per collection), drain oil (contained in one gallon or larger sealed containers), bags or cans of clean-out type material at the curb away from the green recycling cart. Extra paper or other recycling can be bagged in clear plastic bags and placed at curb (not in front of the Green Recycling Cart).

Service Provided by

John's Disposal Service, Inc.

P.O. Box 329

Whitewater, WI 53190

1-262-473-4700

www.johnsdisposal.com

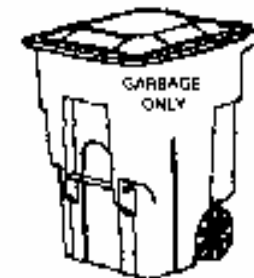
office@johnsdisposal.com

Office Hours Mon – Fri 8:00 – 4:30

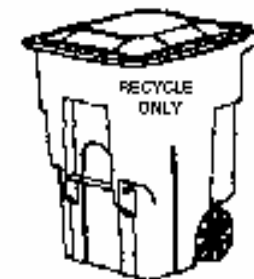
THE CITY OF WHITEWATER

Automated Collection
& Single-Stream
Recycling Program

The **BROWN** Cart
is for Garbage Only



The **GREEN** Cart
is for Recyclables Only



Updated
12/13/05